



## CONTENTS

### FEATURES

<b>Karl Marx-Hof</b> <b>Architectural Legacy of Red Vienna Period</b> <i>by Larisa Sarkadi</i>	5
<b>Melford Motors</b> <i>by Simon Reeves</i>	10
<b>Art Deco In Boulder Colorado</b> <i>by David Wharton</i>	14
<b>Recoleta</b> <i>by Peter Sheridan AM</i>	18
<b>Manchester Unity</b> <b>All Lit Up Again!</b> <i>by Robin Grow</i>	20
<b>Art Deco Bookends</b> <i>by Peter Sheridan AM</i>	24
<b>The Real Sesame Street</b> <b>Opa-Locka, Miami, Florida</b> <i>by Robin Grow</i>	27
<b>Façadism at Melbourne University</b> <i>by Robin Grow</i>	29

# SPIRIT OF PROGRESS

JOURNAL OF ART DECO AND MODERNISM SOCIETY INC.

issue

51

SPRING 2012  
volume 13 number 4

# ART DECO BOOKENDS

Peter Sheridan AM

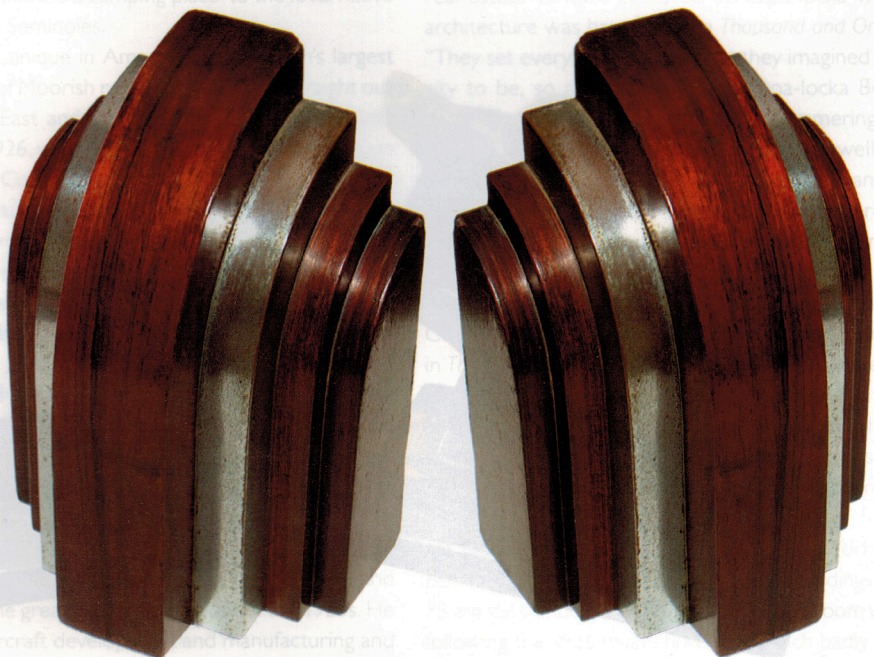


**TOP LEFT:**  
Maribou Storks  
Designer: Marcel Bouraine  
(1886-1948) France c1930  
Metal, Ivory, Marble

**RIGHT & LOWER LEFT:**  
Winged Ball Bookends  
Designer: Edgar Brandt  
(1880-1960) France c1930  
Wrought iron

For centuries the bookend has been a companion to the printed word. Both functional and decorative bookends serve to buttress a row of books as well as demarcating and highlighting the grouping. The bookend has been fashioned from every solid material available – wood, metal, precious stone, ceramic and plastic. The design is only limited by vertical and horizontal elements with

imagination in between. The aesthetic of Art Deco styling marries well with the intrinsic utility of the bookend. Many famous designers are represented in these mass produced domestic items. Thus we find many beautiful bookends from the 1930s and 1940s exhibiting all the elements of Deco styling expressed in a variety of materials and which today have become pieces of artwork in their own right.



**TOP:**  
 Designer: Marco Zim  
 (1880-1963) USA c1930  
 Metal

**CENTRE:**  
 Carvacraft  
 (John Dickinson & Co)  
 Designer: Charles Boyton  
 (1885-1958) UK c1945

**BOTTOM:**  
 Designer: John Graz  
 (1891-1980) Brazil c1930  
 Brazilian Rosewood &  
 Chrome



**TOP:**  
Radio simulating  
books & bookends  
RCA Victor Co  
USA c1940  
Bakelite

**CENTRE:**  
Nutbird Bookends  
YZ Co (Dunhill)  
UK c1940  
Wood, Glass, Catalin

**BOTTOM:**  
Skiers  
USA c1935  
Catalin (Cast  
Phenolic Resin)